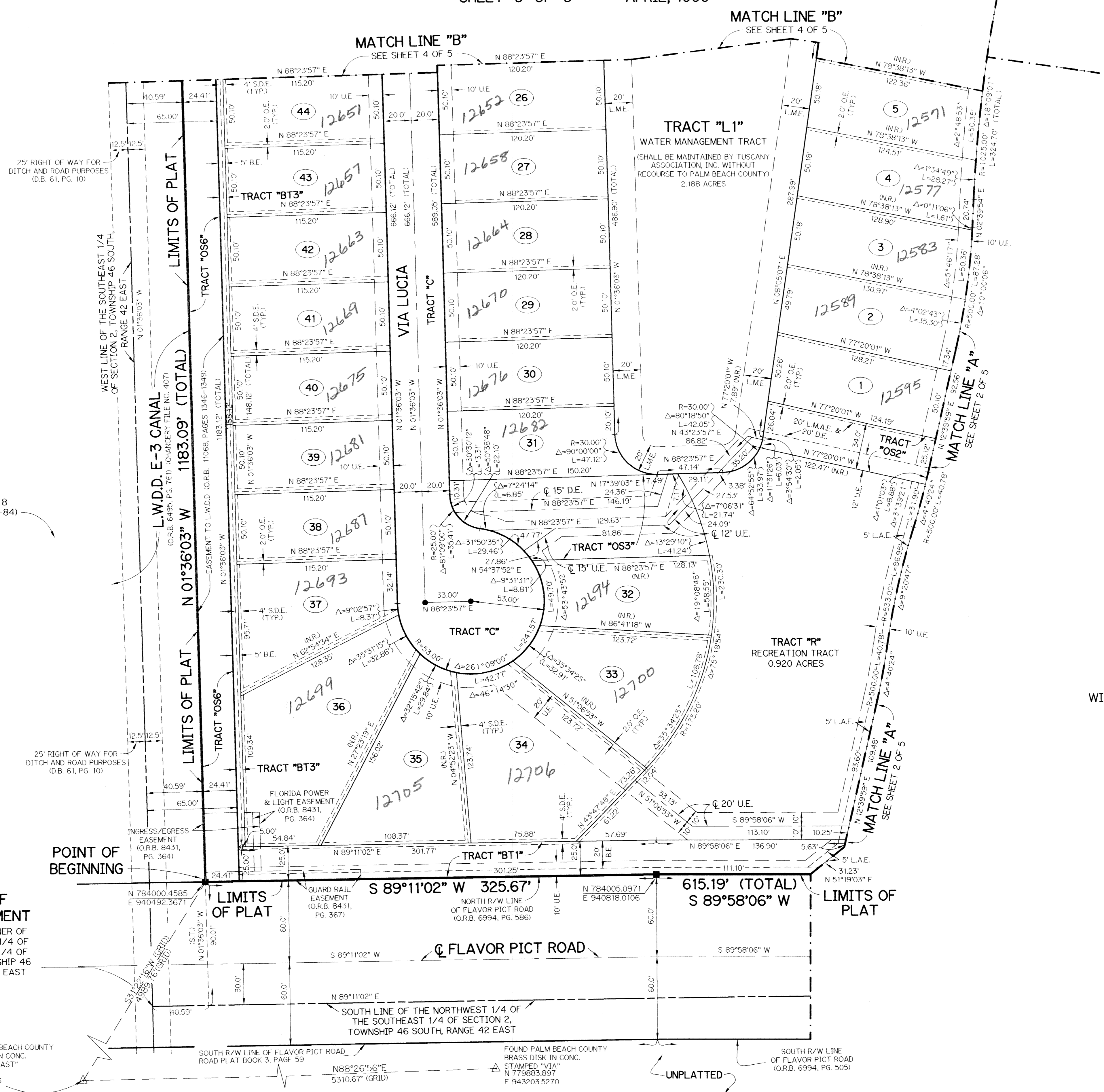
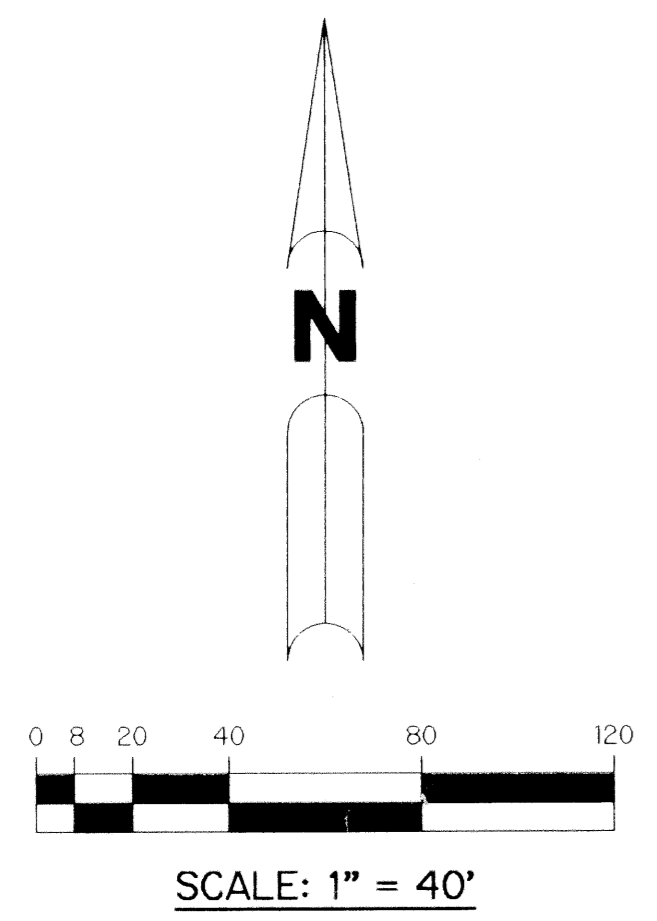


CORAL LAKES XII

CORAL LAKES PLANNED UNIT DEVELOPMENT

A PARCEL OF LAND LYING IN SECTION 2,
TOWNSHIP 46 SOUTH, RANGE 42 EAST,
PALM BEACH COUNTY, FLORIDA.

SHEET 3 OF 5 APRIL, 1999



LEGEND:

- - SET PERMANENT REFERENCE MONUMENT, LB-6674
- - PERMANENT CONTROL POINT, PSM #4190
- Δ - DELTA ANGLE
- B.E. - BUFFER EASEMENT
- C - CENTERLINE
- D.B. - DEED BOOK
- D.E. - DRAINAGE EASEMENT
- I - ARC LENGTH
- L.A.E. - LIMITED ACCESS EASEMENT
- I.M.A.F. - LAKE MAINTENANCE ACCESS EASEMENT
- L.M.E. - LAKE MAINTENANCE EASEMENT
- L.W.D.D. - LAKE WORTH DRAINAGE DISTRICT
- N.R. - NOT RADIAL
- N.T.S. - NOT TO SCALE
- O.E. - OVERHANG EASEMENT
- O.R.B. - OFFICIAL RECORD BOOK
- P.B. - PLAT BOOK
- PGS. - PAGES
- P.S.M. - PROFESSIONAL SURVEYOR AND MAPPER
- R - RADIUS
- R/W - RIGHT-OF-WAY
- S.D.E. - SWALE DRAINAGE EASEMENT
- S.T. - SURVEY TIE
- U.E. - UTILITY EASEMENT
- C.B. - CHORD BEARING
- N 737648.0171 DENOTES STATE PLANE COORDINATES
- E 905258.2326

NOTE:

COORDINATES SHOWN ARE GRID COORDINATES
 DATUM = NAD 83 (1990 ADJUSTMENT)
 ZONE = FLORIDA EAST ZONE
 LINEAR UNIT = U.S. SURVEY FEET
 COORDINATE SYSTEM 1983 STATE PLANE
 TRANSVERSE MERCATOR PROJECTION
 ALL DISTANCES ARE GROUND
 SCALE FACTOR = 1.000034746
 NO ROTATION: PLAT BEARING = GRID BEARING

THIS INSTRUMENT PREPARED BY
 WILBUR F. DIVINE, P.S.M. 4190, STATE OF FLORIDA
 LAWSON, NOBLE AND WEBB, INC., LB-6674
 ENGINEERS PLANNERS SURVEYORS
 420 COLUMBIA DRIVE, SUITE 110
 WEST PALM BEACH, FLORIDA

SUBDIVISION Coral Lakes 12
 BOOK 85
 PLANNED UNIT DEVELOPMENT
 ZONING PD-15
 QUAD # 30
 SE 98-1303
 TAZ 900
 FUD NAME Ivy Bay

POINT OF COMMENCEMENT
 SOUTHWEST CORNER OF THE NORTHWEST 1/4 OF THE SOUTHEAST 1/4 OF SECTION 2, TOWNSHIP 46 SOUTH, RANGE 42 EAST

KEY MAP

